

BULGARIA - Sofia Region

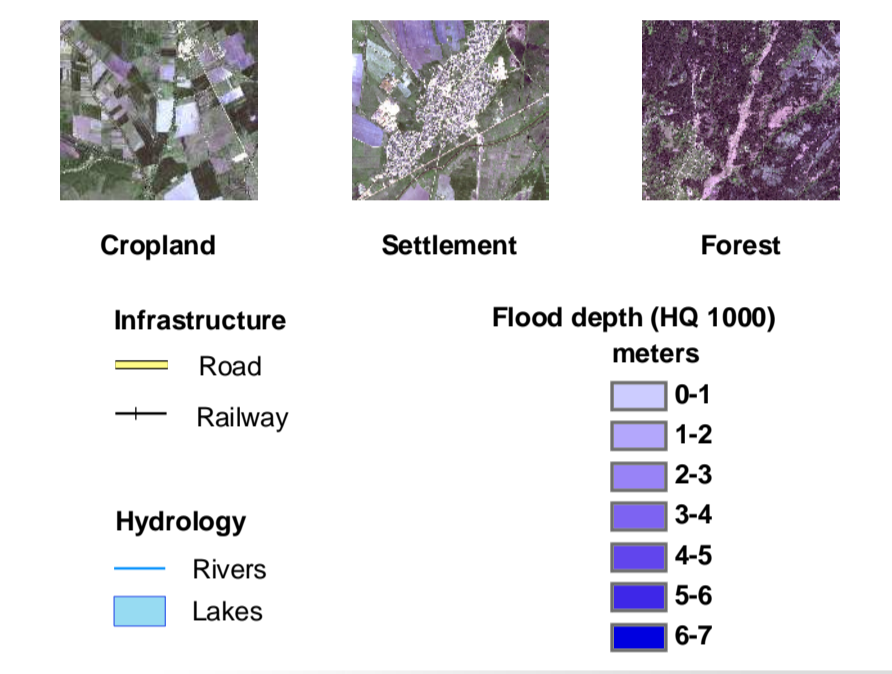
Iskar River Potential Flood Extent (HQ 1000)

Flood Hazard Map

Location Diagrams



Legend



Interpretation

Flood hazard is the probability of occurrence of a potentially damaging flood event of a certain magnitude within a given time period and area (Brooks, 2003). The map shows the flood hazard event with a low probability (HQ 1000 – extreme event) of Iskar River in Sofia Region, Bulgaria. This region is characterized by periodic flooding and it is necessary to produce flood hazard maps with probability of different scenarios. The map comprises information on flood risk zones and the corresponding flood extent line.

Image processing: Orthorectification and Thematic classification – Erdas Imagine;
Water Elevation Extraction Methods: - HEC-RAS
Manual interpretation and spatial analysis - ArcGIS

Cartographic Information

Local projection: UTM Zone 35 N, Datum: WGS 84
Geographic projection: Geographic (DMS), Datum: WGS 84
Scale: 1:25 000 for A1 prints
0 0.25 0.5 0.75 1 1.25 Kilometres

Data Sources

Imagery layers
© Telespazio - 2010
Date of satellite image: 2010/05/01
Type Satellite: GeoEye 1
Scene name: po 3801190 0020000; po 3801190 0020001; po 3801190 0030000; po 3801190 0030001
Projection: WGS 1984 UTM Zone 35 N
Vector layers
© ReSAC - 2010
Rivers, Lakes, Settlements, Roads
© Ministry of Environment and Water of Bulgaria - JICA Project 2005
Railway
© National topomaps 1:100 000
Raster layer
© ReSAC 2010 - DEM
© National topomaps 1:100 000
Cross sections measurements
© ReSAC - 2009
Statistical information
© NIMH/BAS - Rainfall values

Framework

SAFER and its suppliers have attempted to provide mapping that is as accurate as is available with the source material, however all geographic information has limitations due to the scale, resolution, date and interpretation of the original source materials. Accordingly, SAFER maps are distributed as is, without any warranty, either expressed or implied, including but not limited to warranties of suitability to a particular purpose or use. The entire risk as to the results of the use of these data is assumed by the user and the supplier accepts no liability for any loss, damage or inconvenience caused as a result of reliance on the mapping.
www.emergencyresponse.eu

Map produced on the 02nd of November 2010 by ReSAC
© ReSAC 2010
To get more information on this mapping go to <http://www.resac-bg.org> or email resac@techno-link.com

